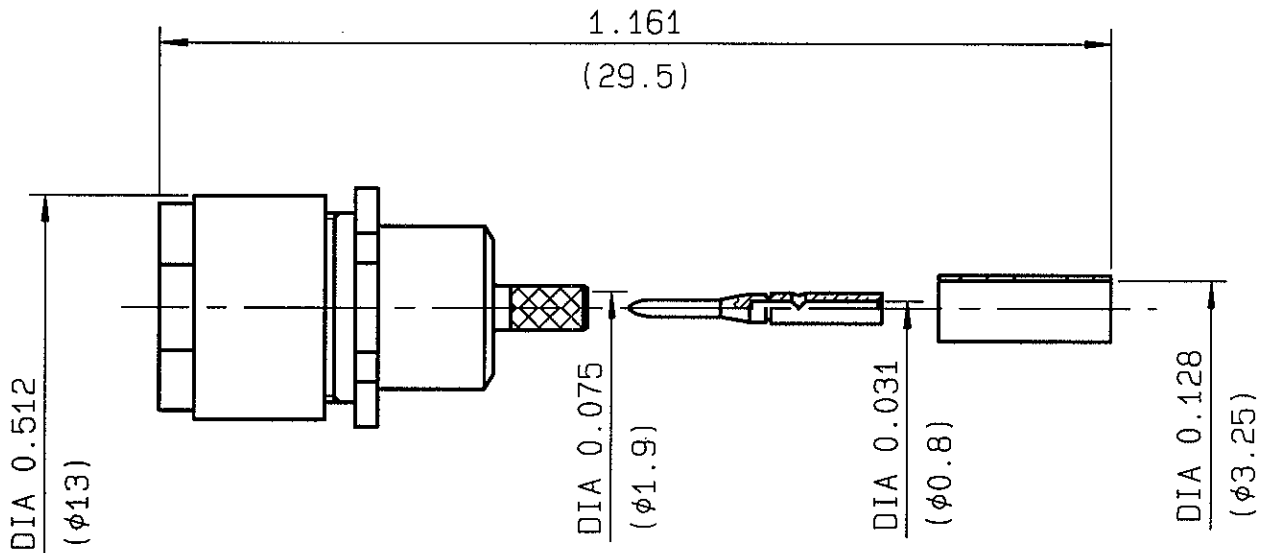


**STRAIGHT PLUG, SLIDE-ON  
CRIMP TYPE, CABLE 2.6/75**

**R131.074.500**  
**SERIES DIN T1.6-5.6**



NOMINAL IMPEDANCE	<b>75</b> Ω	CABLES : <b>RG 179</b>
FREQUENCY RANGE	<b>0-1</b> GHz	<b>RG 187</b>
TEMPERATURE RATING	<b>-40/+155</b> °C	
V.S.W.R	<b>NA</b> + x F(GHz)Maxi	
RF INSERTION LOSS	<b>NA</b> √F(GHz) dB Maxi	
VOLTAGE RATING	<b>1000</b> Veff Maxi	
DIELECTRIC WITHSTANDING VOLTAGE	<b>1500</b> Veff Mini	
INSULATION RESISTANCE	<b>500</b> MΩMini	OTHERS CHARACTERISTICS
HERMETIC SEAL	<b>NA</b> Atm.cm <sup>3</sup> /s	CABLE RETENTION <b>50</b> N Mini
LEAKAGE (pressurized only)	<b>NA</b>	CENTER CONTACT RETENTION
MECHANICAL DURABILITY	<b>500</b> Cycles	Axial force - mating end <b>27</b> N Mini
WEIGHT	<b>10.9</b> gr	Axial force - opposite end <b>27</b> N Mini
SPECIFICATION		Torque <b>NA</b> cm.N Mini
		RECOMMENDED TORQUES
		Mating <b>NA</b> cm.N
		Panel nut <b>NA</b> cm.N
		Clamp nut <b>NA</b> cm.N

CONNECTOR PARTS	MATERIALS	FINISH	(all values are given in micrometers)
BODY	BRASS	NICKEL	
OUTER CONTACT	BRONZE	GOLD OVER NICKEL	
CENTER CONTACT	BRASS	GOLD OVER NICKEL	
INSULATOR	PTFE	-	
GASKET		-	
OTHERS PIECES			

MASTRIA: ISSUE 9816A00 CREATION DATE 26-JUN-96 FILE PART-NUMBER 96-0400-069



Connect to the future

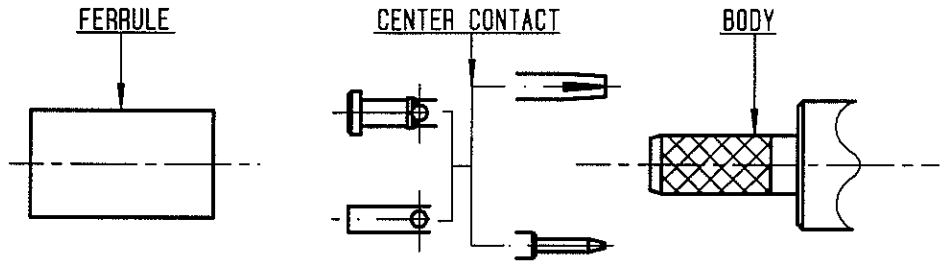
The information given here is subject to change without notice. Design changes may be in order to improve the product.



**RADIALL®**

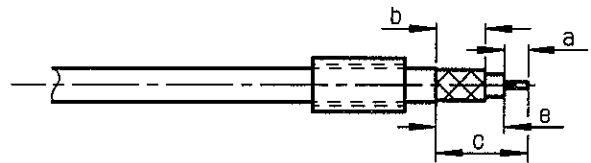
**R131.074.500**

ISSUE 9816A00 SERIES  
DIN T1.6-5.6



①

Slide ferrule onto cable  
Strip the cable .

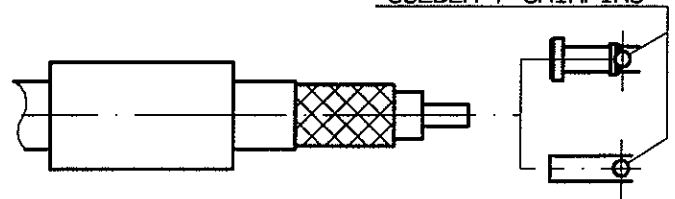


Stripping	a	b	c	d	e
inch	0.157	0.236	0.488	0	0.331
mm	4	6	12.4		8.4

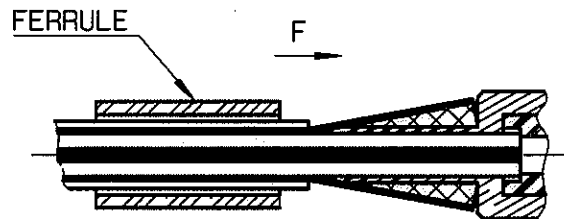
②

Slide center contact on until it  
bottoms against cable dielectric .  
Solder or crimp center contact .  
Crimping tool : R282 281 000 ( Pos. 8 )

SOLDER / CRIMPING

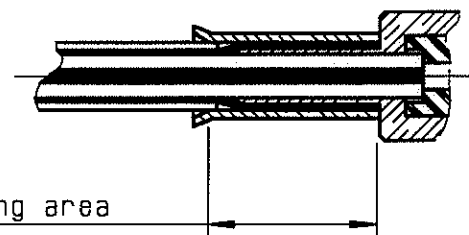


Fan the braid .  
Slide cable into the body until  
bottoms against insulator .  
Slide ferrule over the braid .  
(In direction F)



④

Crimp the ferrule with crimping tool  
R 282 235 011 ( Hex. : 0.128 )  
Cut excess of braid if necessary .



Crimping area

MASTRIAND